



ZCF CARTRIDGE FILTER

INSTALLATION AND OPERATING INSTRUCTIONS



INTRODUCTION

Congratulations on the purchase of your ZODIAC ZCF series cartridge filter.

The ZCF series filters are made to last by utilising the best quality materials available. The tank is made from high quality ABS plastics, capable of withstanding the harshest of conditions.

INSTALLATION OF ZCF SERIES

1. Ensure cartridge filter is located on a clean, stable and level base.
2. The ZCF series filter has three inlet ports (from pump) and one outlet port (to pool/spa). Glue one of the 50mm slip tails supplied into one of the inlets and second slip tail supplied into the outlet of the filter that suits the plumbing configuration.
3. Glue in the supplied blanking cap and drain plug cap into the two remaining inlets. Allow a minimum of one hour for glue to dry before subjecting filter to system pressures.
4. Glue water connection pipes from pump and pool return to 50mm tails supplied. (Ensure locking nut is placed on pipe before gluing on tails.
5. Apply Teflon tape (not included) to the pressure gauge and screw into lid where indicated.

START UP INSTRUCTIONS

1. Before starting up your ZCF filter, make sure the cartridge is in the filter and the lid and lock ring are in place and tightened.
2. Open the suction and return line valves (when fitted).
3. Start pump and open the air release valve on the filter lid 2 to 3 turns – air will begin to be forced from the tank. Once water begins to flow from the valve, tighten to close. Check there is a good flow of water back into the pool.
4. Clean the cartridge when the flow to the pool reduces or the pressure gauge increases by 15 – 20 kPa.

PUMP PRIMING

1. With the pump OFF, remove the lid from the pump strainer and fill with water to the top of the lit pot.
2. Replace and tighten lid on pump.
3. If valve has been installed on the pump suction line, close before filling strainer. Open again after lid has been securely fastened in place. Any valves on the return lines should be open. The pump should not need to be re-primed unless the pump has been drained for servicing, or winterizing (refer to complete pump operations manual provided with pump).

TO CLEAN FILTER CARTRIDGE ON ZCF SERIES

1. Stop pump-close valves on the suction and return lines.
2. Open the air bleed valve on the lid.
3. Proceed to loosen locking ring on filter. As you turn the locking ring, the lid of the filter will be lifted out of the body. Once lid is free of the body, lift lid and locking ring together and place in a clean location. You can now remove the cartridge.
4. Clean the cartridge by soaking it in a mild solution of chlorine and warm water for 15 minutes and then hose off with water. Alternatively, special formulated element cleaning solutions can be purchased from most pool professionals. (Note: do not use high powered water jets to clean – this may cause damage to the element)
5. Replace the cartridge; ensure correct location on the bottom spigot.
6. Insert the top locating spigot into the element.
7. Clean the lid, locking ring and lid 'o' ring. These should be rinsed with clean water to ensure not grit or grime has deposited into the threads. Replace the lid and locking ring onto the top of the filter tank, ensuring correct alignment with the locating spigot..
8. Commence tightening the lid lock ring – the lid will begin to be pulled down into the filter tank. Continue to tighten the lock ring until safety catch locks into place. **DO NOT OVERTIGHTEN LOCKING RING AS THIS MAY CAUSE THE FILTER TO LEAK..**
9. Open the valves – start the pump.

NEVER LOOSEN THE LOCK RING WHEN THE PUMP IS WORKING

FILTER SPECIFICATIONS

MODEL	ELEMENT PART NO.	FILTER AREA	FLOW RATE L/Hr	FLOW RATE L/M	4 HR TURN OVER	6 HR TURN OVER	PUMP SIZE	SHIP KG'S	CUBIC MEASURE
ZCF75	Ro846300	75sq ft 7.00m ²	17,400	290	70,000	104,000	550W 1100W	7.8 kg	0.075m ³
ZCF100	Ro846400	100sq ft 9.40m ²	22,500	375	90,000	135,000	750W 1100W	9.6 kg	0.101m ³
ZCF150	Ro846500	150sq ft 14.00m ²	28,500	445	106,800	160,200	750W 1500W	9.9 kg	0.101m ³
ZCF200	Ro846600	200sq ft 19.00m ²	29,400	490	117,600	176,400	750W 1500W	11.8 kg	0.127m ³

MAINTENANCE OF YOUR FILTER

Your new product incorporates moving parts and withstands high velocity water with chemicals in it. It is important to note that over time some of these parts will wear in the normal course of use and require regular checks, maintenance and possible replacement.

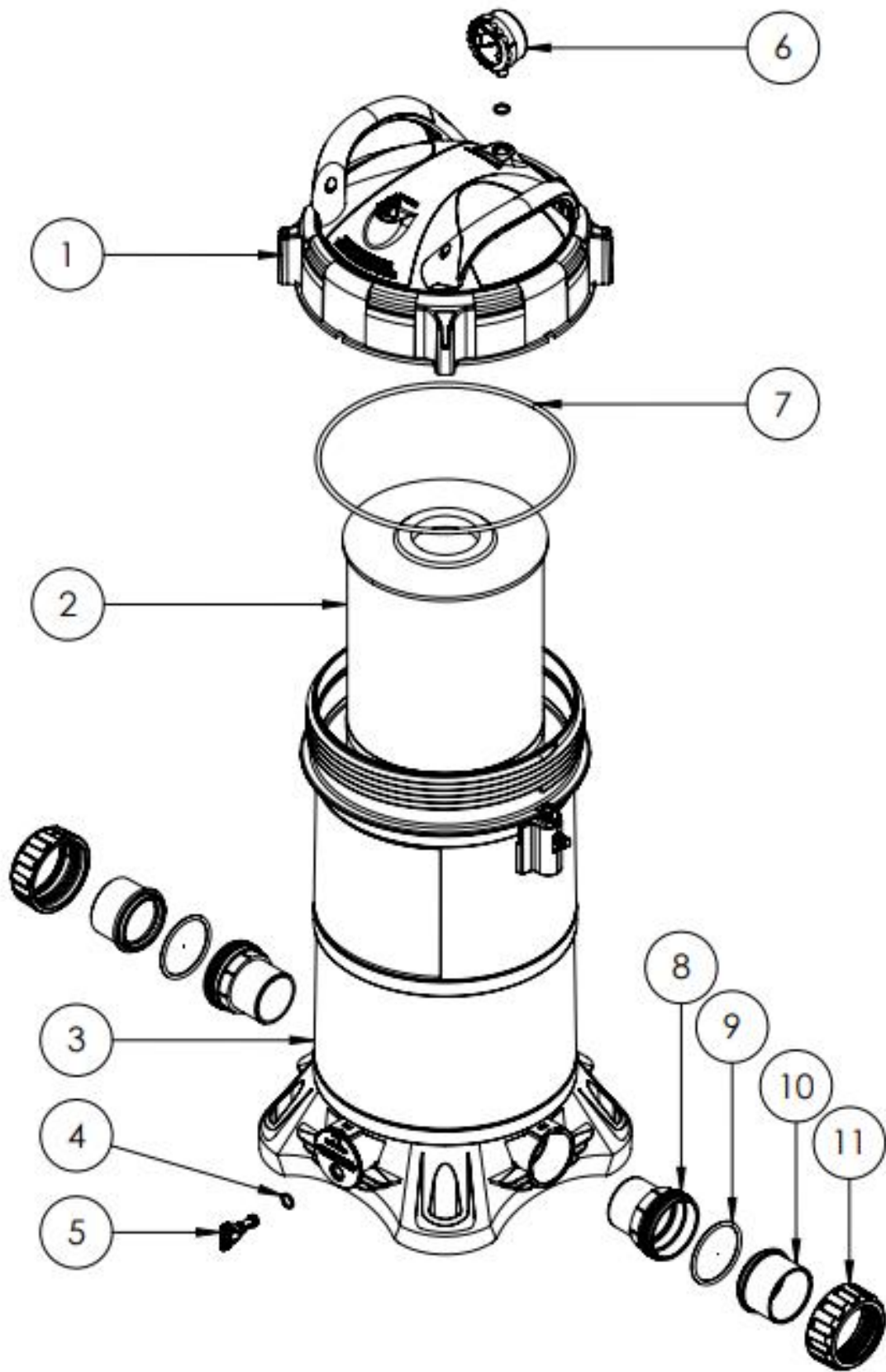
Performing the maintenance checks below will help to identify parts that have worn and require repair/replacement before further serious damage is sustained. Please note that repair/replacement of moving parts due to regular wear and tear are the responsibility of the pool owner(s) and are not deemed to be covered under warranty. A small amount of regular care and attention to your pool equipment will help ensure long life and trouble free performance.

Maintenance Schedule:

Timing	Maintenance Check	Service action (if required)
Fortnightly	Check pressure gauge - If pressure increase is greater than 20kPa cleaning may be required	In accordance with instructions, clean elements with a high pressure cleaner or purpose element cleaner
Three Monthly	Check inlet/outlet o'rings for leaks Check operation of pressure gauge – salt water can prematurely reduce the life of a gauge	Isolate Pump, turn power off, clean and grease O rings or replace if necessary Replace gauge if required
Annually	Compare operating pressure of a cleaned filter to initial pressure (when new). Also check for signs of damage to elements	If pressure is more than 30 – 40 kPa different from cleaned elements to new filter, replace elements

Important note: Regular maintenance is important to ensure long life and trouble free performance of your pool equipment. If unable to perform the maintenance yourself, contact your local poolshop for a quote to arrange a trained service technician to perform the maintenance for you..

SPARE PARTS OF YOUR FILTER



ITEM No	DESCRIPTION	PART NUMBER	QTY
1	COMPLETE LID ASSEMBLY	SP7820502	1
2	FILTER ELEMENT - 75	78096	1
2	FILTER ELEMENT – 100	78097	1
2	FILTER ELEMENT - 150	78098	1
2	FILTER ELEMENT 200	78099	1
3	FILTER BODY 50/75	SP7821110	1
3	FILTER BODY – 100/150	SP7821210	1
3	FILTER BODY 200/250	SP7821310	1
4	DRIAN PLUG O-RING _o	78103	1
5	DRAIN PLUG	78705	1
6	PRESSURE GAUGE WITH COVERS	75043	1
7	LID O-RING	78105	1
NOT SHOWN	BLANKING CAP		1
	BLANKING CAP WITH DRAIN	78214 78218	1
8	GLUE IN THREADED PIPE FITTING	950923	2
9	O RING	70003	2
10	2" GLUE IN UNION TAIL	950920	2
10	1 ½" GLUE IN UNION TAIL	950918	2
11	LOCK NUT	950919	
NOT SHOWN	LID SPIGOT	78203	1
NOT SHOWN	LID HANDLES	7820202	2
NOT SHOWN	HANDLE SCREWS	40218	4
NOT SHOWN	GLUE IN UNION TAIL ASSEMBLY ORING 2" TAIL, GLUE IN THREADED TAIL, LOCK NUT	10650	1
NOT SHOWN	INSTRUCTION MANUAL	INST475	1
NOT SHOWN	FILTER LABEL	LABEL577	1
NOT SHOWN	COMPONENT BAG	78328	1



For all warranty terms and conditions and to register your warranty, simply visit www.zodiac.com.au/warranty and complete your details. Or scan the QR code and be taken directly to the registration page

Record your Equipment details here for quick reference:

Model No.: _____

Serial No.: _____



Zodiac is a registered trademark of Fluidra Group Australia Pty Ltd
ABN 87 002 641 965

Fluidra Group Australia
219 Woodpark Rd, Smithfield,
NSW. 2164 Australia

Tel; 1300 763 021
Fax; 1300 781 688

Email; apac.aftersales@zodiac.com
www.zodiac.com.au

Due to constant developments and improvements,
specifications may change without notice.
Improper use could affect performance and void warranty

©Copyright Zodiac Australia Ltd 2016



INST475